

Assessing the status of northern white-cheeked crested gibbon in Phou Den Din National Protected Area (PDD NPA) and surrounds, Lao PDR



Khambang Thipphavong, Programme Coordinator of **Lao Biodiversity Association**

Fund by: IUCN, International Union for Conservation of Nature and Natural Resources

Introduction about white-cheeked gibbon (status, distribution)

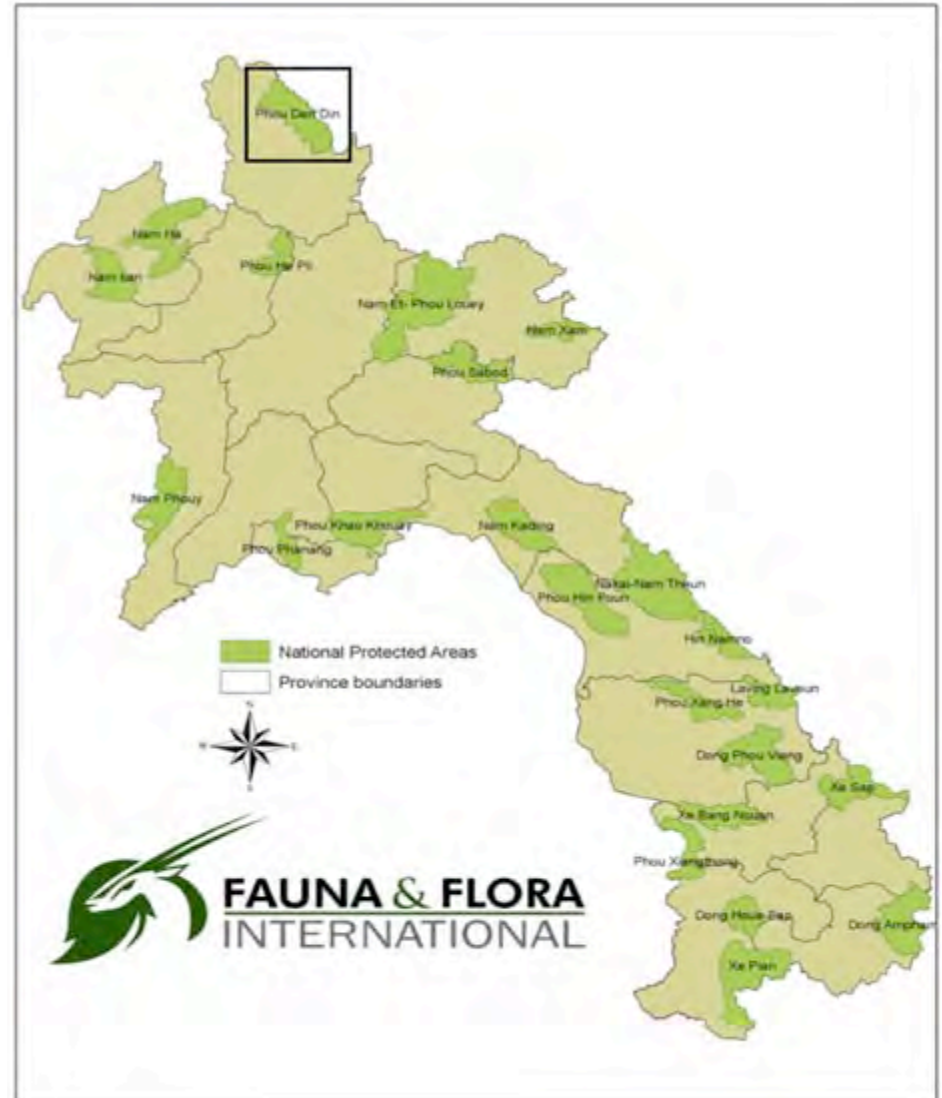
- The gibbon species in PDD NPA is the Critically Endangered Northern white-cheeked gibbon (*Nomascus leucogenys*)
- The species is endemic to Southern China, Vietnam and Laos (Bleisch et al., 2008; Rawson et al., 2011), although it is now believed to be extinct from China (Fan et al., 2013). Laos holds the largest remaining population and is a priority for the long term conservation of the species.
- This LBA preliminary survey in PDD NPA aimed at assessing the potential of the area for global conservation of *N. leucogenys*.



Introduction about white-cheeked gibbon (status, distribution)

PDD NPA is located in northern Laos and shares a border to the east with Vietnam,

One of 24 important National Parks lies in the northeast of Phongsaly province.



Mission's activities

- Meeting with District and Province officials of Natural Resources & Environment (DoNRE, PoNRE and province military).
- Training on survey methods to LBA, DoNRE, PoNRE and military staffs)
- Planning of survey sites
- Conduct field surveys: village interviews and field surveys to determine
 - the distribution
 - population status
 - threats to the resident gibbon population

Interview villagers and military at PDD NPA for the important for the species gibbon



Survey sites

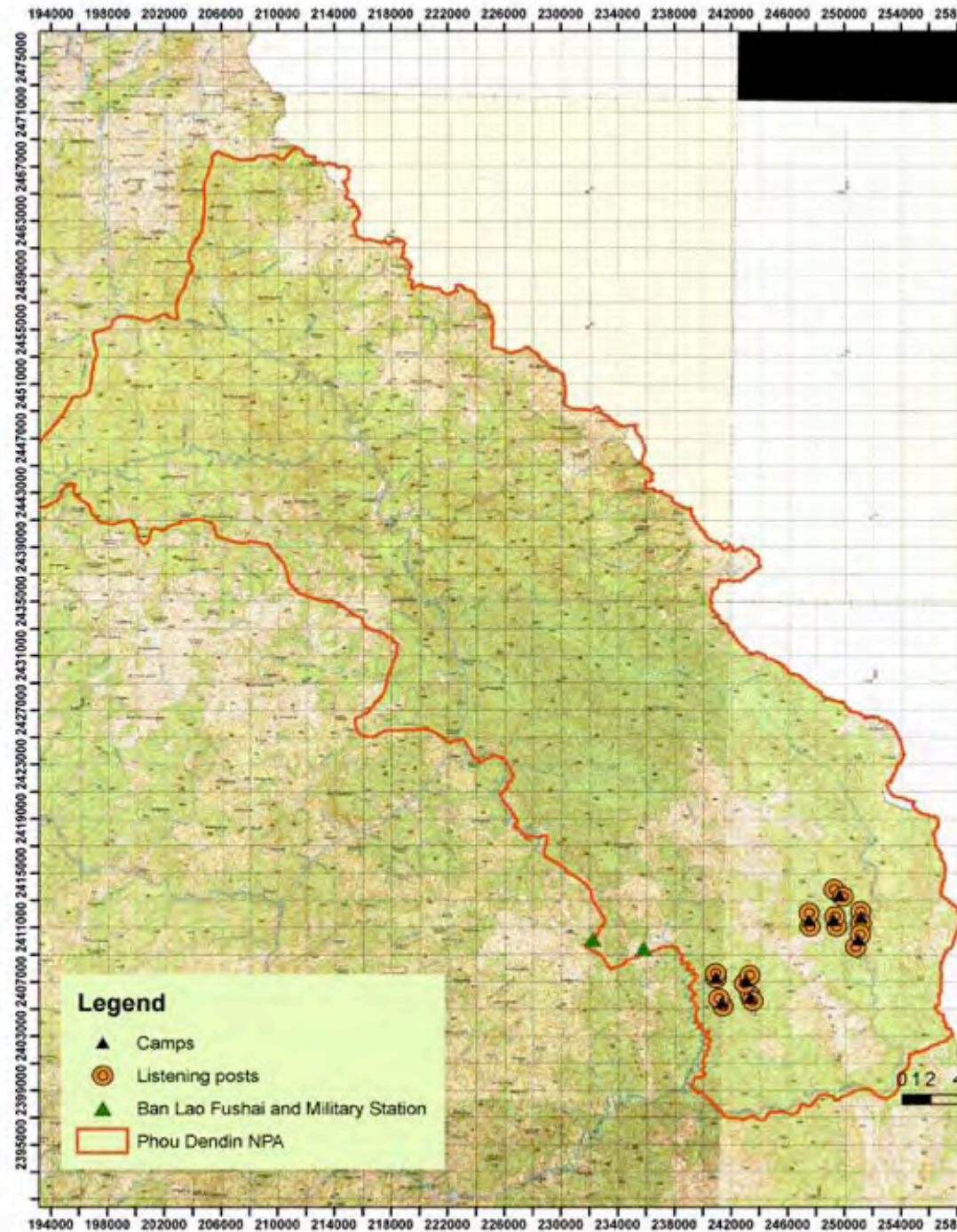
Site 1, to the south east of Ban Lao Fushai and military station in adjacent forests to the east of the Nam Paho.

Site 2, towards the Vietnamese boarder, to the west of the Nam Houn.

At each site, four (Site 1) and five (Site 2) camps were visited, at each of these camps, two listening posts were visited in the morning.

RESULTS:

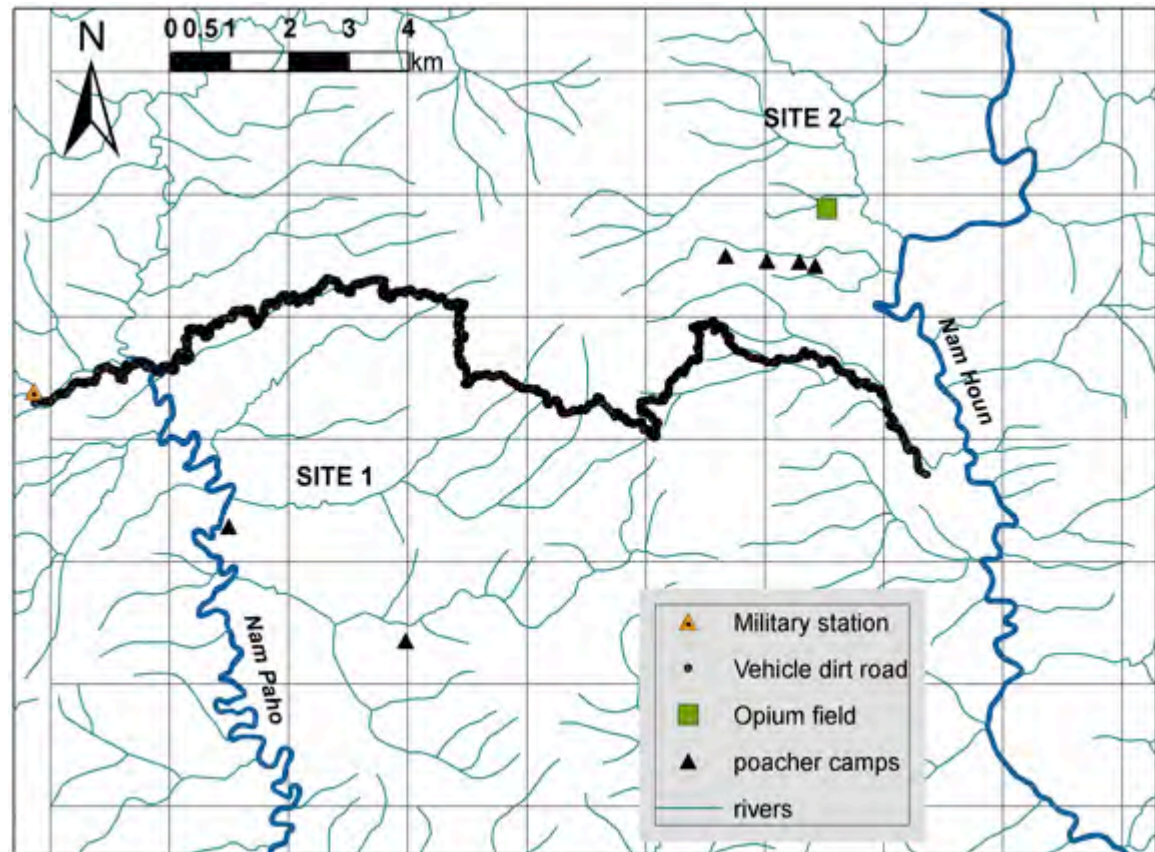
At least 10 groups of gibbons recorded



Survey results and Discussion

Threats

Poachers (mostly Vietnamese Hmong, more closer to boarder) [using guns and snares], Opium fields, road



Conclusions & Recommendations

1. FURTHER SURVEYS FOR GIBBONS IN PDD NPA

2. MANAGEMENT STRATEGY PLAN & TRAINING ON WILDLIFE LAWS TO OFFICIALS AND VILLAGERS

3. FURTHER GENERAL WILDLIFE SURVEYS IN PDD NPA



Thank you